

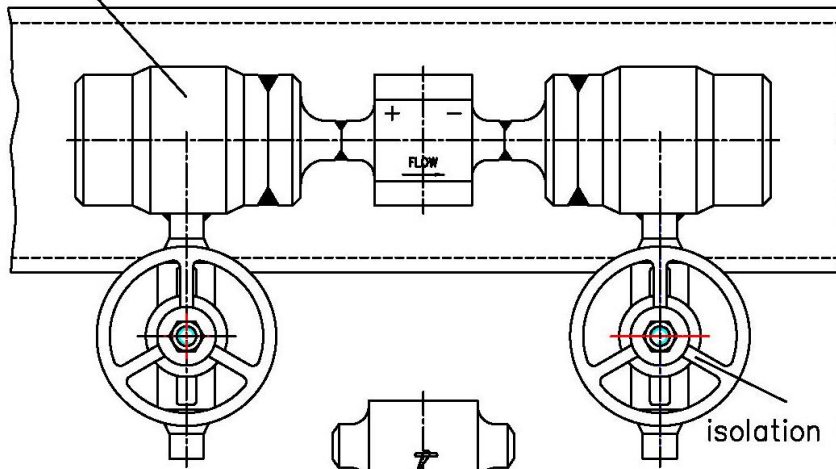
Itabar Pitot Tube-IBFD-HTG

Technical data

Flanged process connection
High temperature design
PN16-PN400 150lbs-2500lbs
DN40-DN1000 11/2"-32"
Sensor Sizes: 20/25/35
T max.: 650°C / 1202F
End support as an option
Condensation pots
Sensor material: AISI 316Ti 16Mo3; 13CrMo4.4; 10CrMo9.10; X10CrMoVnb91.
Max. operation pressure: 400 bar

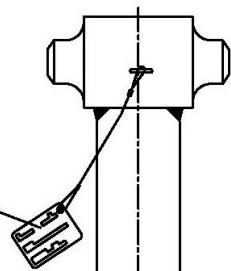
Drawing for IBFD-HTG

condensate vessel



isolation valves

TAG plate
material : 316SS



mounting stud

welding
at site

wall thickness (WS)

inside diameter (ID)

X... mm length of insulation

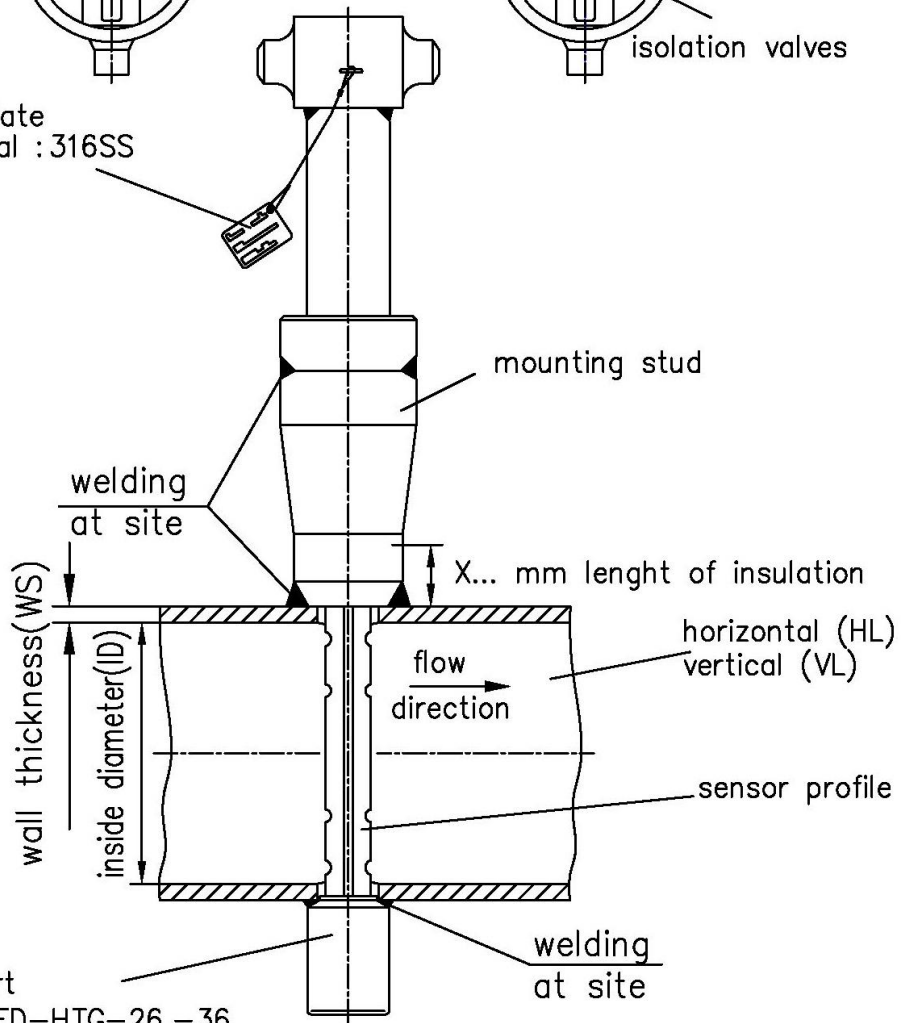
flow
direction

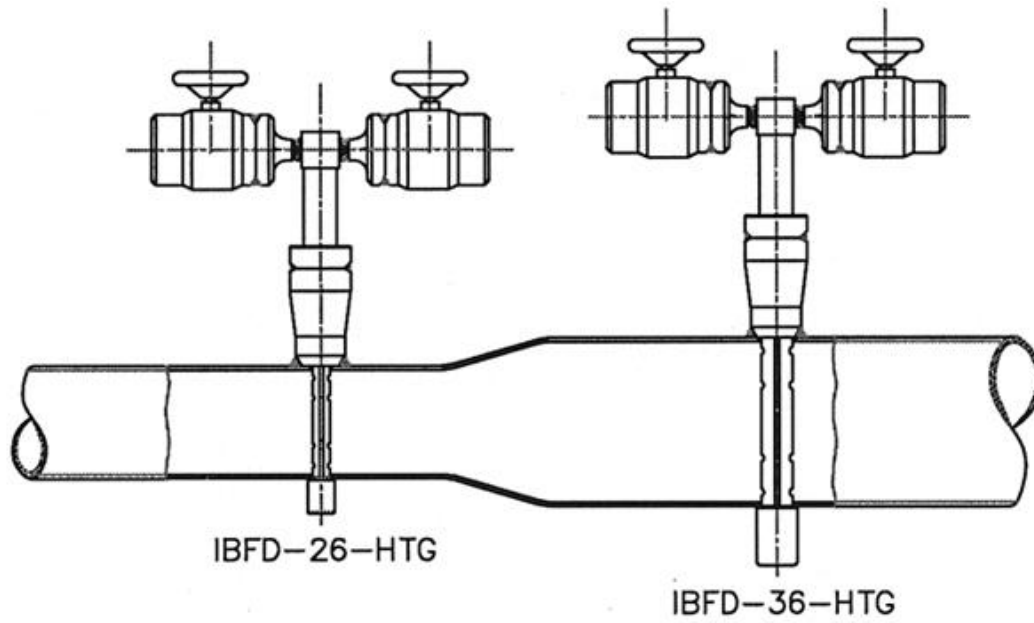
horizontal (HL)
vertical (VL)

sensor profile

end support
only for IBFD-HTG-26,-36

welding
at site





Pipe Size DN	Pipe Size Inches	Maximum flow volume Qv in m ³ /h	
		IBFD -26-HTG	IBFD -36-HTG
100	4	1103	---
125	5	1456	---
150	6	1810	---
200	8	2516	---
250	10	3286	---
300	12	4119	4501
350	14	4925	5399
400	16	5706	6300
500	20	7341	8018
600	24	8948	9716